

Looking at Birds

Birds are all around us —
in your garden, in the park, along the road sides,
in the fields, flying over head....

When you see a bird:

1. Look at the size:

Is it smaller than a sparrow?

Is it larger than a robin? — a crow?

(Most of the pictures in this book are
made nearly life size.)

2. Notice the shape of the bird:

Does it have a long tail?

Is the neck short or long?

How big is the bill?

3. Notice the colors and patterns:

Does it have a white spot that shows in flight?

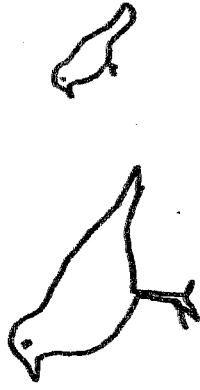
Is there some color that is very bright? Where is it?

4. Look at the habitat:

Is it in tall grass?

In water? Sitting on a high wire?

5. Watch the behavior of the bird.



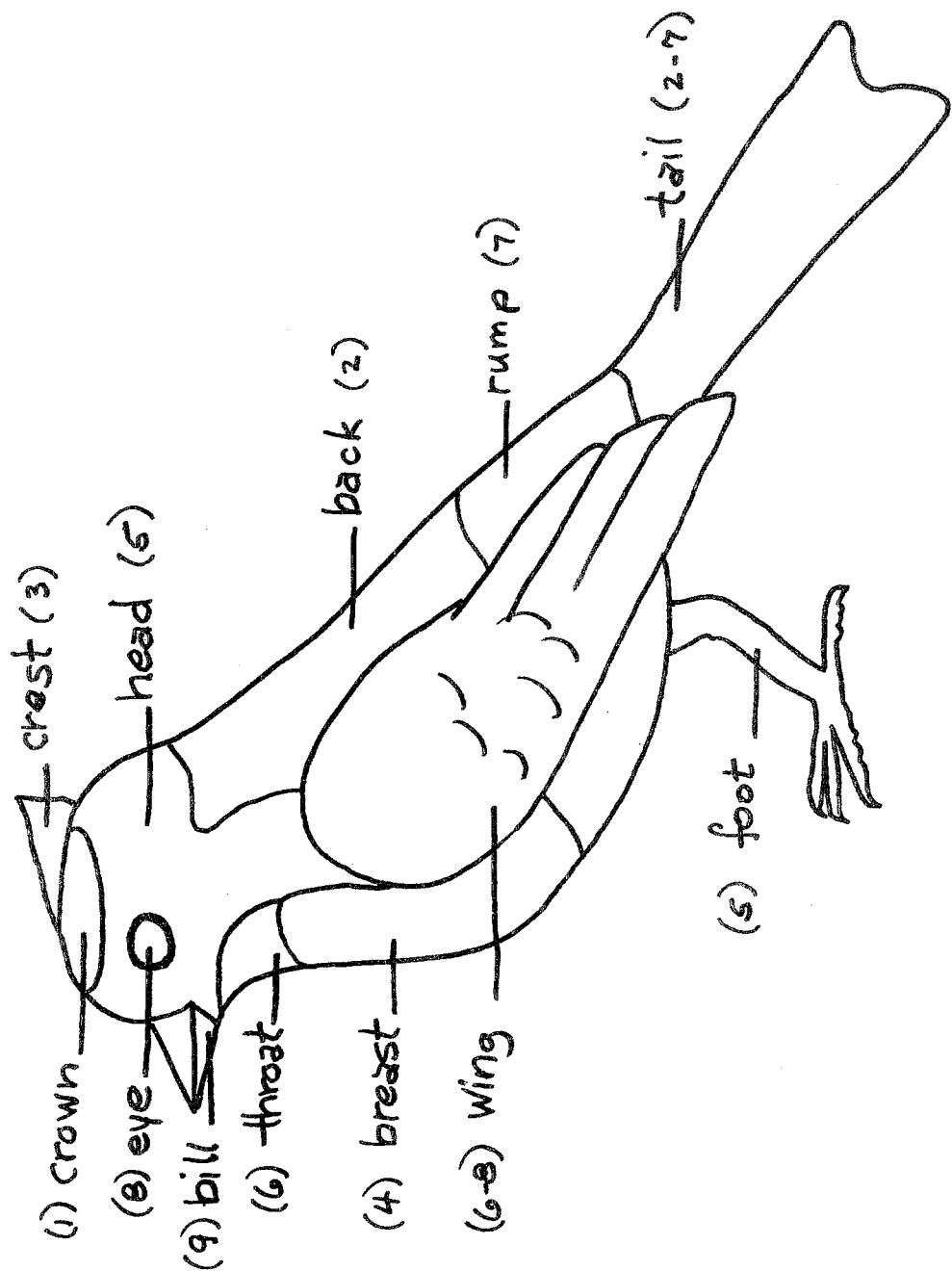
As you study the pictures of birds in this book, follow this color code and learn the markings of each different bird. (For added help, it is very useful to use an identification guide book and ask some adult to learn with you.)

Color Code

- | | |
|--------------------------------------|--------------------------------------|
| 1. = <input type="checkbox"/> white | 6. = <input type="checkbox"/> blue |
| 2. = <input type="checkbox"/> brown | 7. = <input type="checkbox"/> red |
| 3. = <input type="checkbox"/> tan | 8. = <input type="checkbox"/> gray |
| 4. = <input type="checkbox"/> beige | 9. = <input type="checkbox"/> orange |
| 5. = <input type="checkbox"/> yellow | 10. = <input type="checkbox"/> green |
- ♂ = male ♀ = female

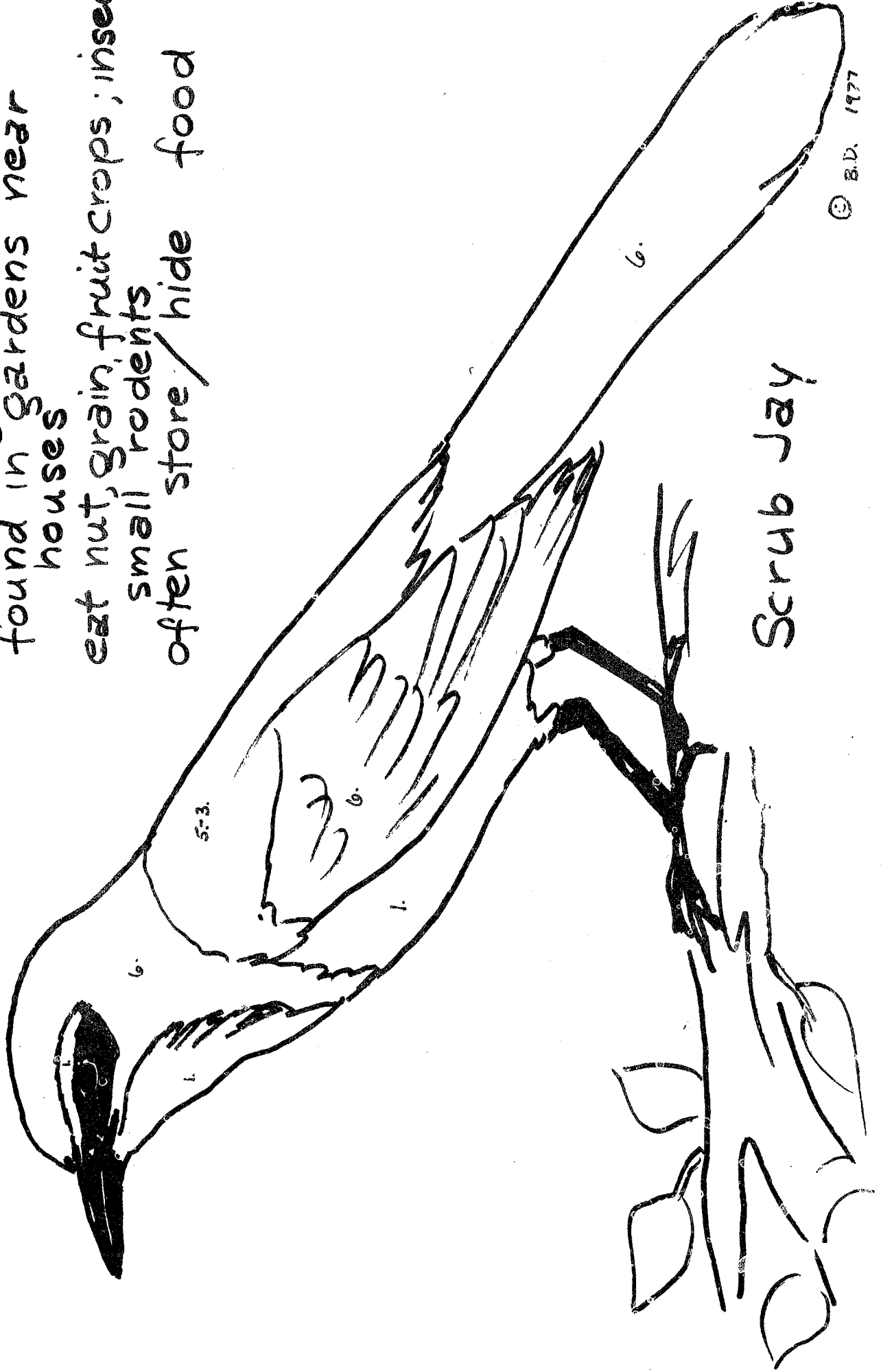
Where two numbers show (7-2) combine the colors (red-brown).

It is important to learn some of the parts of the bird. As you learn the labeled areas on this bird, use your color code to mark the parts.



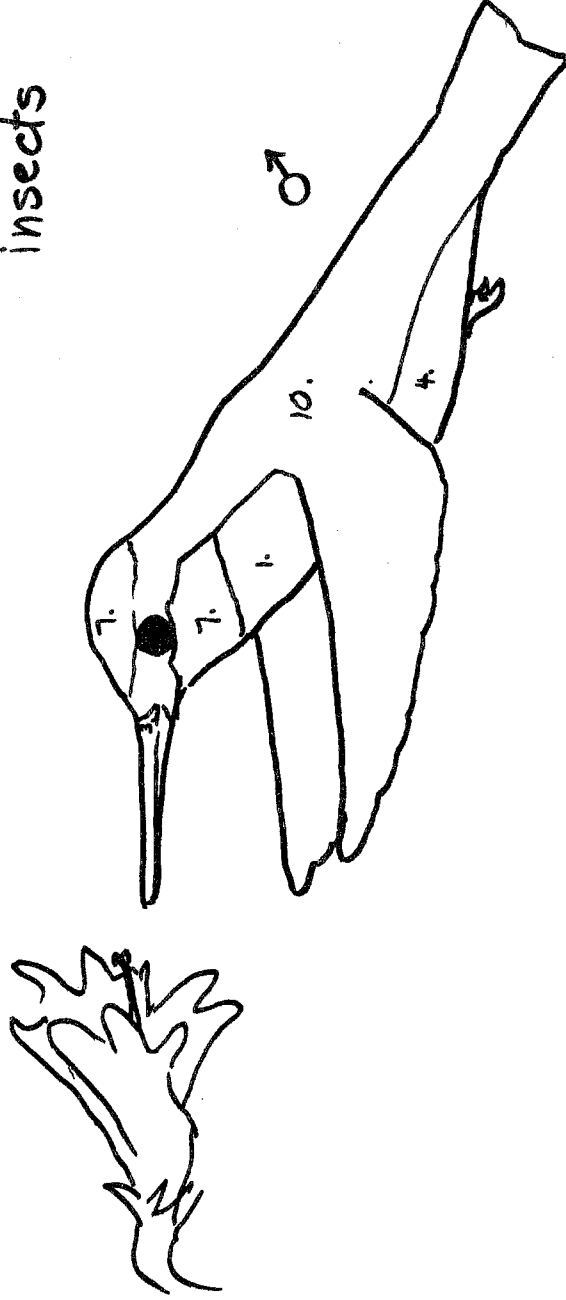
10 3/4" long
found in gardens near
houses

eat nut, grain, fruit crops; insect
small rodents
often store / hide food



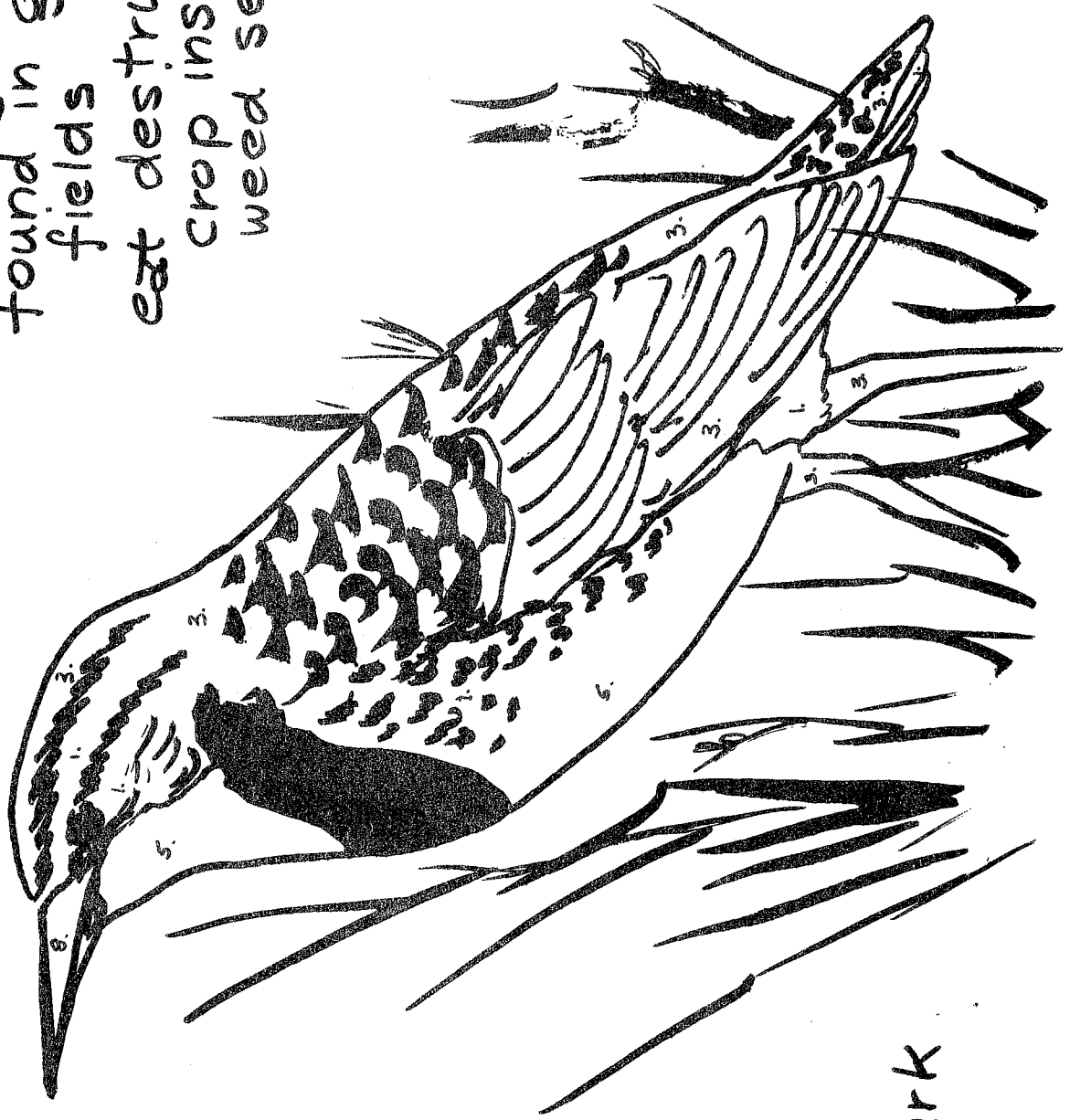
Scrub Jay

3½" long
found year-round all over
Calif. in gardens
feed on flower nector and
insects



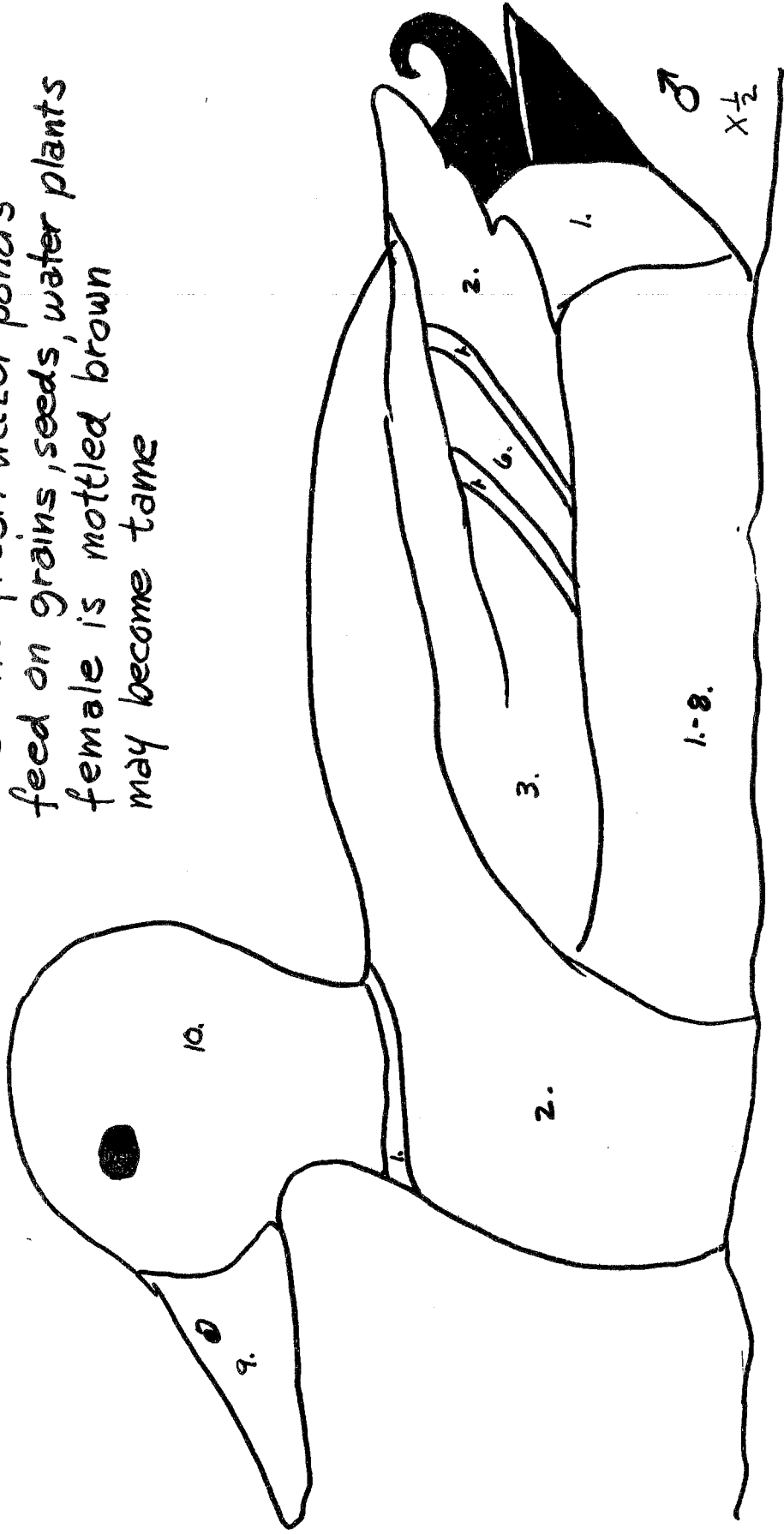
Anna's Hummingbird

8½" long.
found in grassy
fields
eat destructive
crop insects,
weed seeds



Western
Meadowlark

22" long
seen in fresh water ponds
feed on grains, seeds, water plants
female is mottled brown
may become tame



Mallard